

# PACIFIC PARKWAY CENTER

8,881 Sq. Ft.  
Office Space For Lease

12909  
PACIFIC PARKWAY CENTER

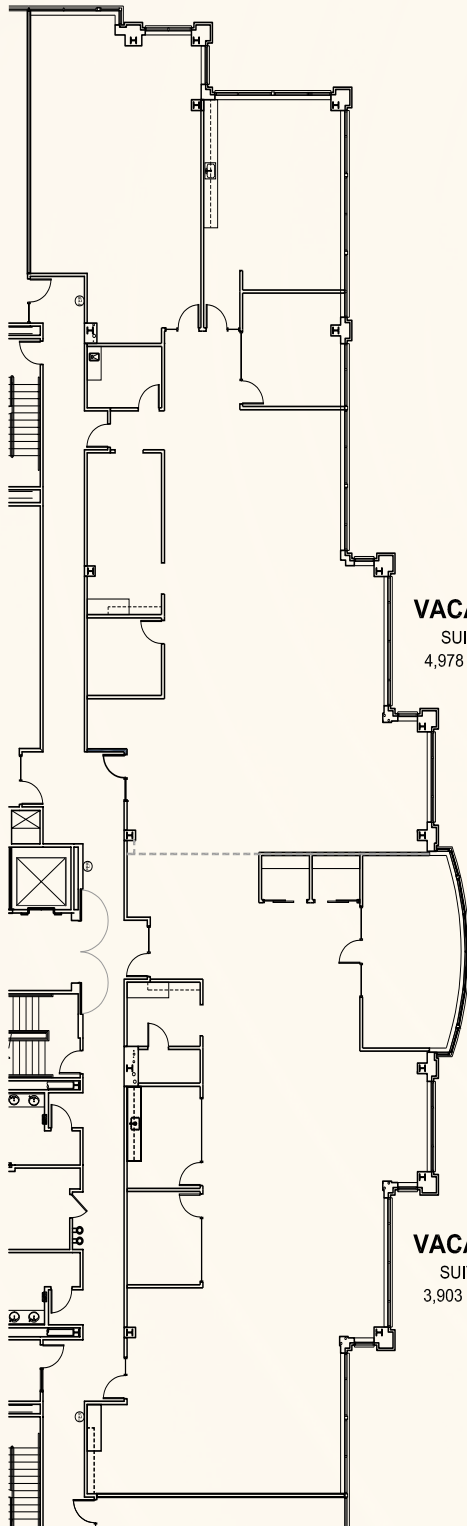
12909

12909 SW 68th Pkwy, Suite 200, Tigard, OR 97223

**PACTRUST**

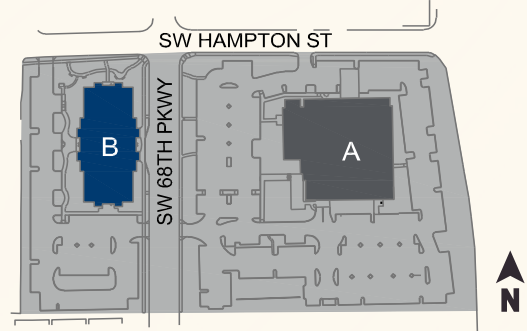
### Space Plan | Suite 200

**PacTRUST**

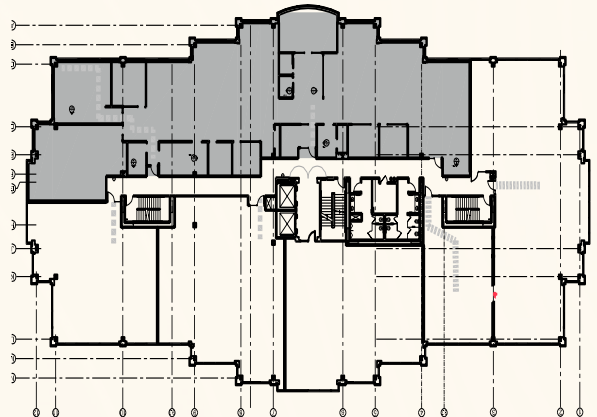


**VACANCY A**  
SUITE #200  
4,978 SF TOTAL

**VACANCY B**  
SUITE #205  
3,903 SF TOTAL



### Building Plan





# Key Features

 8,881 sq. ft

Enjoy a Portland office location while benefiting from Washington County's favorable business tax structure

---

Building conference room

---

Upgraded common areas

---

Immediate access to Interstates 5 and 217

---

4/1,000 parking ratio

---

Nearby amenities and services

---

Option to demise space - split suite to 4,978 SF & 3,903 SF

---

**Lease Rate:**  
**\$36.00/sq. ft./yr.**

**Full Service**



# Leasing Contacts

Jake Bigby

jakeb@pactrust.com

Caitlin Knecht

caitlink@pactrust.com

503.624.6300

www.pactrust.com

Owned & Managed by

**PacTrust**

Pacific Parkway Center  
Office Space For Lease

12909 SW 68th Pkwy  
Suite 200  
Tigard, OR 97223

